

Drew-A



Traditional (standard)

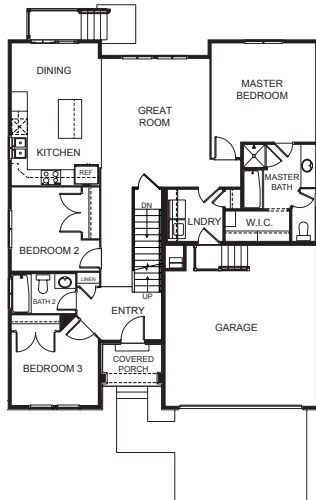


Craftsman (optional)

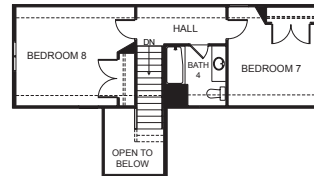


Prairie (optional)

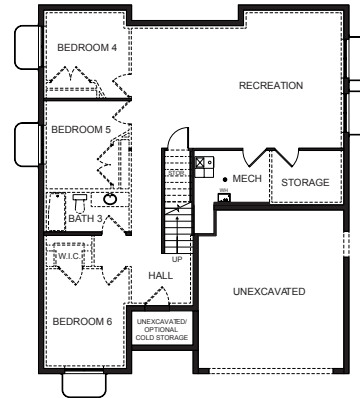
FIRST FLOOR



SECOND FLOOR



BASEMENT



SPECIFICATIONS

First Floor	1,395 sq.ft.	Bedrooms	5	Width	40'-0"
Second Floor	512 sq.ft.	(Total Possible)	(8)	Depth	47'-6"
Basement	1,404 sq.ft.	Bathrooms	3		
Total Sq. Ft.	3,311 sq.ft.	(Total Possible)	(4)		
Total Finished	1,907 sq.ft.				