

# Drew



Traditional (standard)

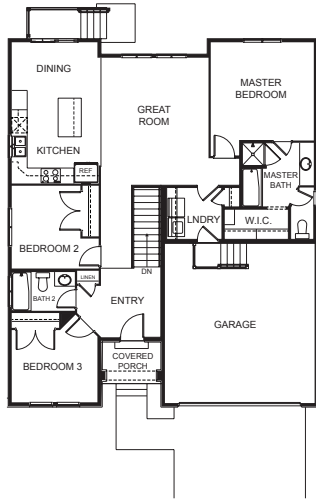


Craftsman (optional)

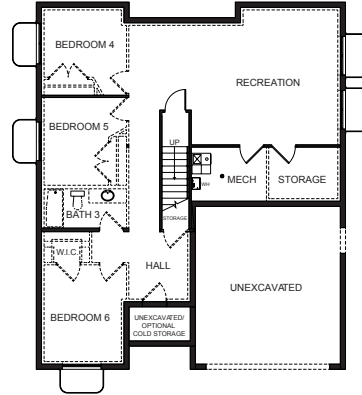


Prairie (optional)

## FIRST FLOOR



## BASEMENT



## SPECIFICATIONS

<b>First Floor</b>	1,386 sq.ft.	<b>Bedrooms</b>	3	<b>Width</b>	40'-0"
<b>Basement</b>	1,376 sq.ft.	<b>(Total Possible)</b>	(6)	<b>Depth</b>	47'-6"
<b>Total Sq. Ft.</b>	2,780 sq.ft.	<b>Bathrooms</b>	2		
<b>Total Finished</b>	1,404 sq.ft.	<b>(Total Possible)</b>	(3)		