

Quincy-B



Traditional (standard)



Craftsman (optional)

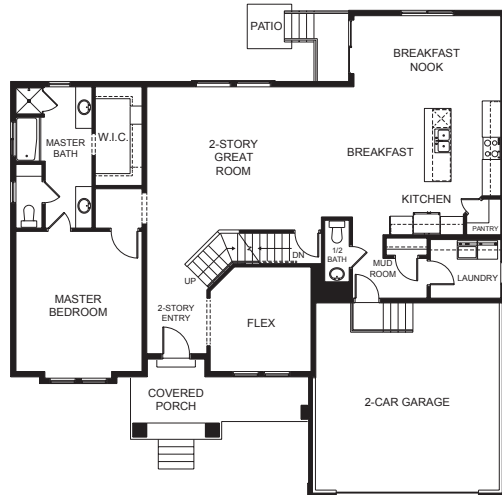


Farmhouse (optional)

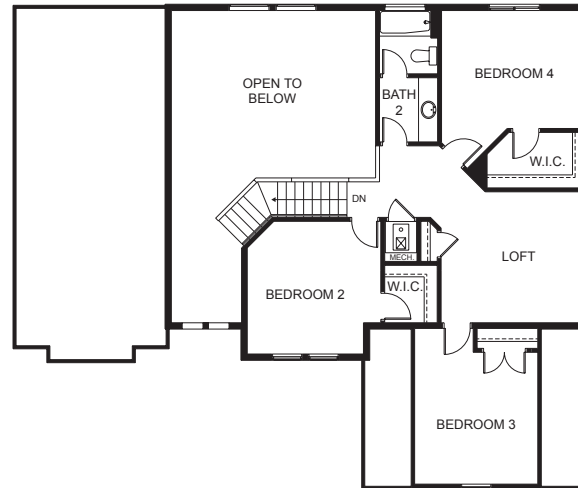


Scandinavian (optional)

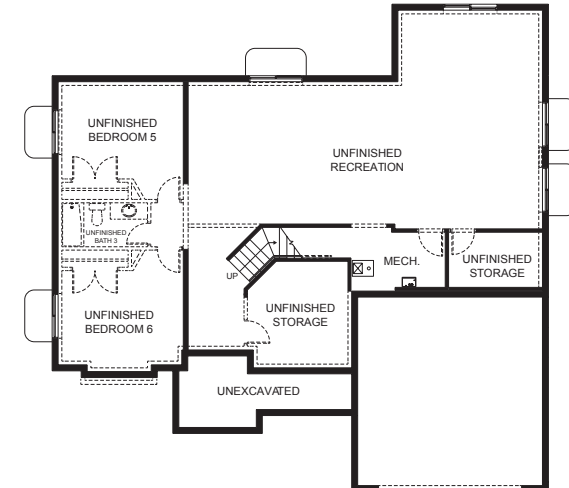
FIRST FLOOR



SECOND FLOOR



BASEMENT



SPECIFICATIONS

First Floor	1,789 sq.ft.	Bedrooms	4	Width	55'-6"
Second Floor	1,013 sq.ft.	(Total Possible)	(6)	Depth	54'-6"
Basement	1,795 sq.ft.	Bathrooms	2.5		
Total Sq. Ft.	4,597 sq.ft.	(Total Possible)	(3.5)		
Total Finished	2,802 sq.ft.				

EDGEhomes reserves the right to make changes at any time. Floor plans, dimensions, and elevations are deemed reliable but may be modified. Renderings and floorplans do not depict exact finishes or design. Please verify inclusions with an EDGEhomes agent.