

Kate-B



Traditional (standard)



Craftsman (optional)

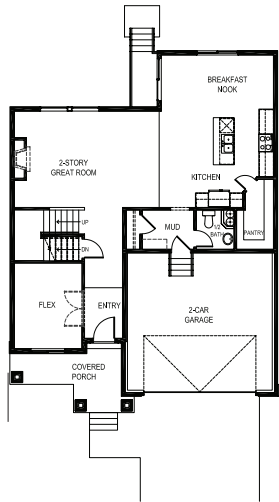


Farmhouse (optional)

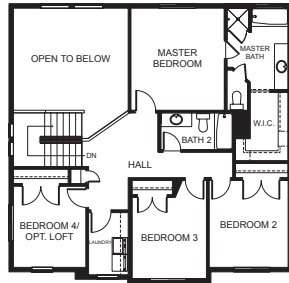


Scandinavian (optional)

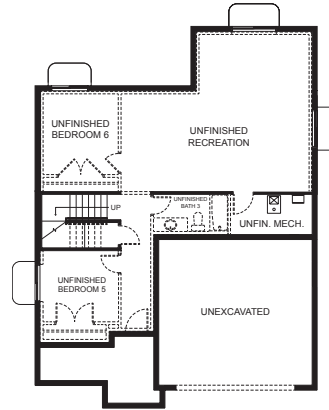
FIRST FLOOR



SECOND FLOOR



BASEMENT



SPECIFICATIONS

First Floor	1,148 sq.ft.	Bedrooms	4	Width	38'-0"
Second Floor	1,073 sq.ft.	(Total Possible)	(6)	Depth	51'-5"
Basement	1,156 sq.ft.	Bathrooms	2.5		
Total Sq. Ft.	3,377 sq.ft.	(Total Possible)	(3.5)		
Total Finished	2,221 sq.ft.				