

# Hailey-C

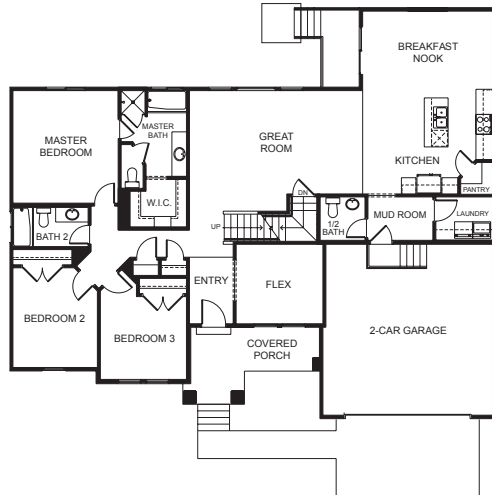


Traditional (standard)

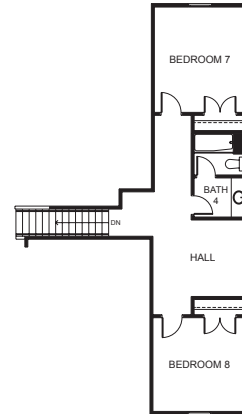


Craftsman (optional)

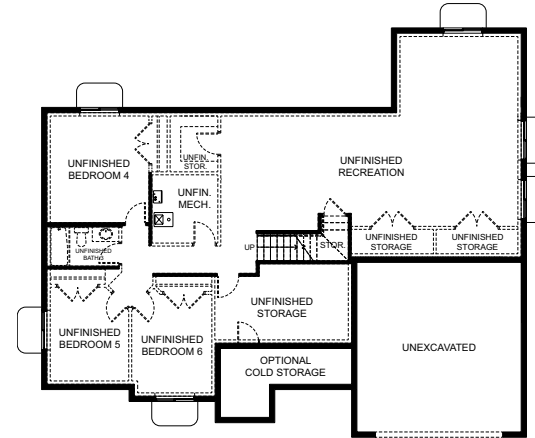
## FIRST FLOOR



## SECOND FLOOR



## BASEMENT



## SPECIFICATIONS

<b>First Floor</b>	1,900 sq.ft.	<b>Bedrooms</b>	5	<b>Width</b>	61'-0"
<b>Second Floor</b>	639 sq.ft.	<b>(Total Possible)</b>	(8)	<b>Depth</b>	50'-0"
<b>Basement</b>	1,906 sq.ft.	<b>Bathrooms</b>	3.5		
<b>Total Sq. Ft.</b>	4,445 sq.ft.	<b>(Total Possible)</b>	(4.5)		
<b>Total Finished</b>	2,539 sq.ft.				

EDGEhomes reserves the right to make changes at any time. Floor plans, dimensions, and elevations are deemed reliable but may be modified. Renderings and floorplans do not depict exact finishes or design. Please verify inclusions with an EDGEhomes agent.