

Hailey-B



Traditional (standard)

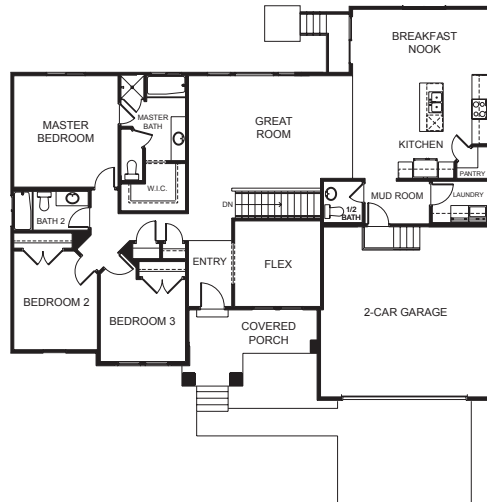


Craftsman (optional)

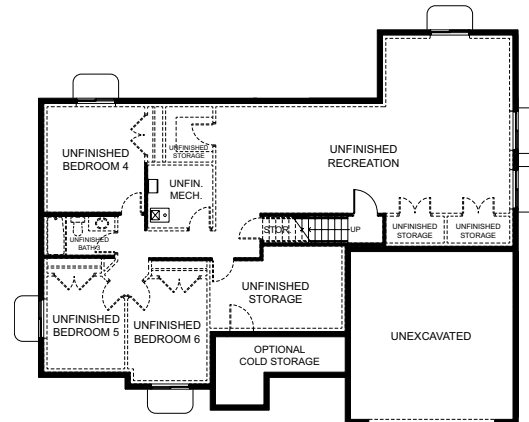


Farmhouse (optional)

FIRST FLOOR



BASEMENT



SPECIFICATIONS

First Floor	1,900 sq.ft.	Bedrooms	3	Width	61'-0"
Basement	1,886 sq.ft.	(Total Possible)	(6)	Depth	50'-0"
Total Sq. Ft.	3,806 sq.ft.	Bathrooms	2.5		
Total Finished	1,920 sq.ft.	(Total Possible)	(3.5)		