

Natalie



Traditional (standard)



Craftsman (optional)

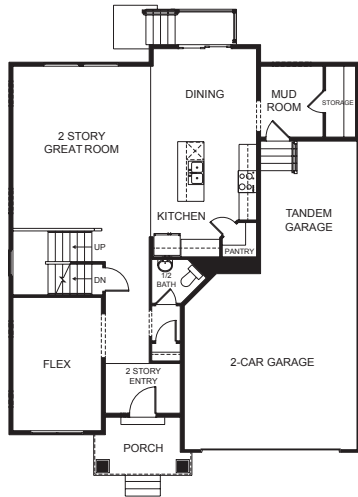


Farmhouse (optional)

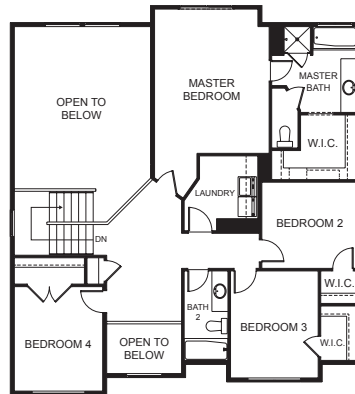


Scandinavian (optional)

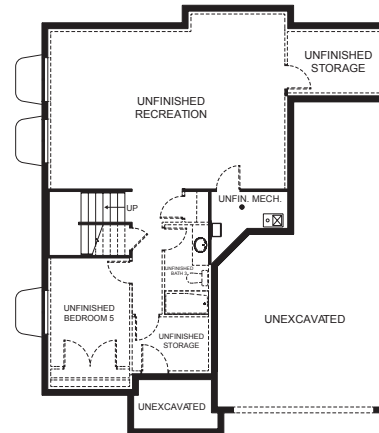
FIRST FLOOR



SECOND FLOOR



BASEMENT



SPECIFICATIONS

First Floor	1,176 sq.ft.
Second Floor	1,220 sq.ft.
Basement	1,178 sq.ft.
Total Sq. Ft.	3,574 sq.ft.
Total Finished	2,396 sq.ft.

Bedrooms	4
(Total Possible)	(5)
Bathrooms	2.5
(Total Possible)	(3.5)

Width	40'-0"
Depth	49'-0"