

Nora



Traditional (standard)



Craftsman (optional)

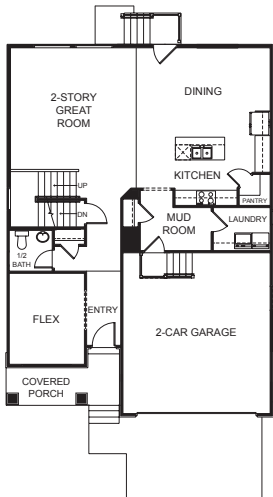


Farmhouse (optional)

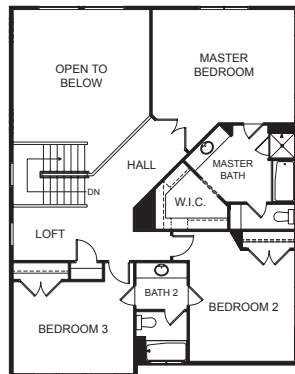


Scandinavian (optional)

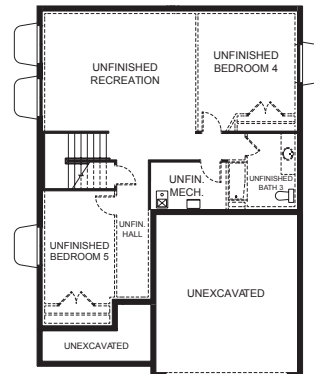
FIRST FLOOR



SECOND FLOOR



BASEMENT



SPECIFICATIONS

First Floor	1,176 sq.ft.	Bedrooms	3	Width	35'-0"
Second Floor	1,189 sq.ft.	(Total Possible)	(5)	Depth	49'-0"
Basement	1,182 sq.ft.	Bathrooms	2.5		
Total Sq. Ft.	3,547 sq.ft.	(Total Possible)	(3.5)		
Total Finished	2,365 sq.ft.				