

# Landon



Traditional (standard)

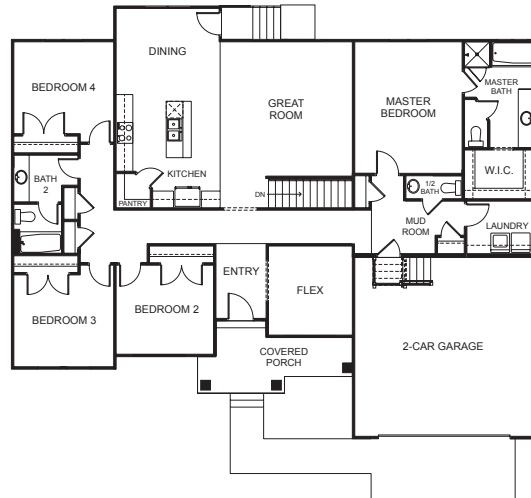


Craftsman (optional)

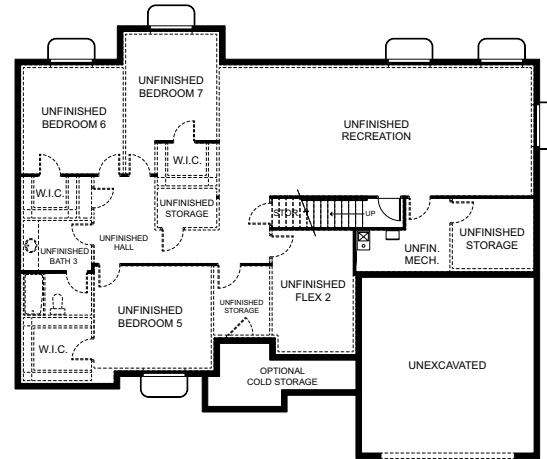


Farmhouse (optional)

## FIRST FLOOR



## BASEMENT



## SPECIFICATIONS

<b>First Floor</b>	2,151 sq.ft.	<b>Bedrooms</b>	4	<b>Width</b>	62'-10"
<b>Basement</b>	2,140 sq.ft.	<b>(Total Possible)</b>	(7)	<b>Depth</b>	51'-10"
<b>Total Sq. Ft.</b>	4,315 sq.ft.	<b>Bathrooms</b>	2.5		
<b>Total Finished</b>	2,175 sq.ft.	<b>(Total Possible)</b>	(3.5)		