

Hailey



Traditional (standard)

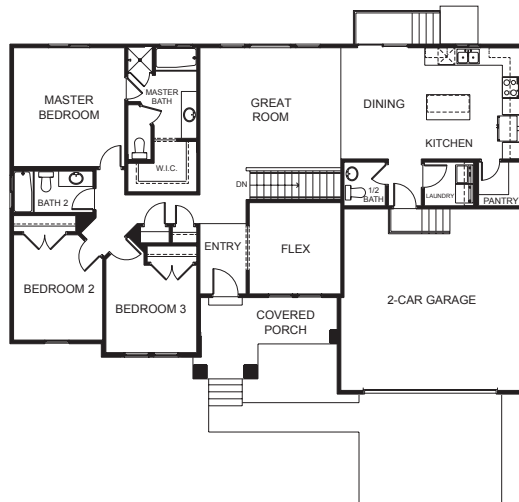


Craftsman (optional)

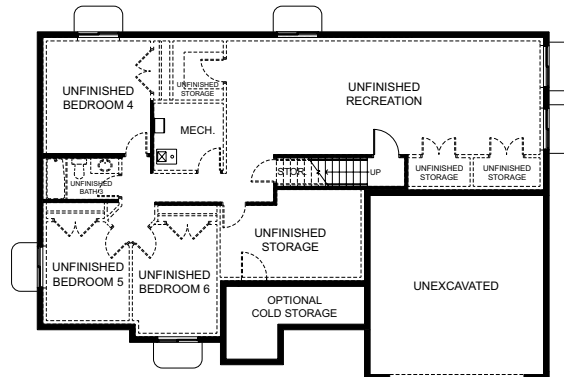


Farmhouse (optional)

FIRST FLOOR



BASEMENT



SPECIFICATIONS

First Floor	1,747 sq.ft.	Bedrooms	3	Width	61'-0"
Basement	1,733 sq.ft.	(Total Possible)	(6)	Depth	41'-6"
Total Sq. Ft.	3,500 sq.ft.	Bathrooms	2.5		
Total Finished	1,767 sq.ft.	(Total Possible)	(3.5)		